

Spindle head F.50 is designed to be mounted on "S" series slide units. Tool holder is ISO 50. Different spindle bearing options are available to suit machining applications.

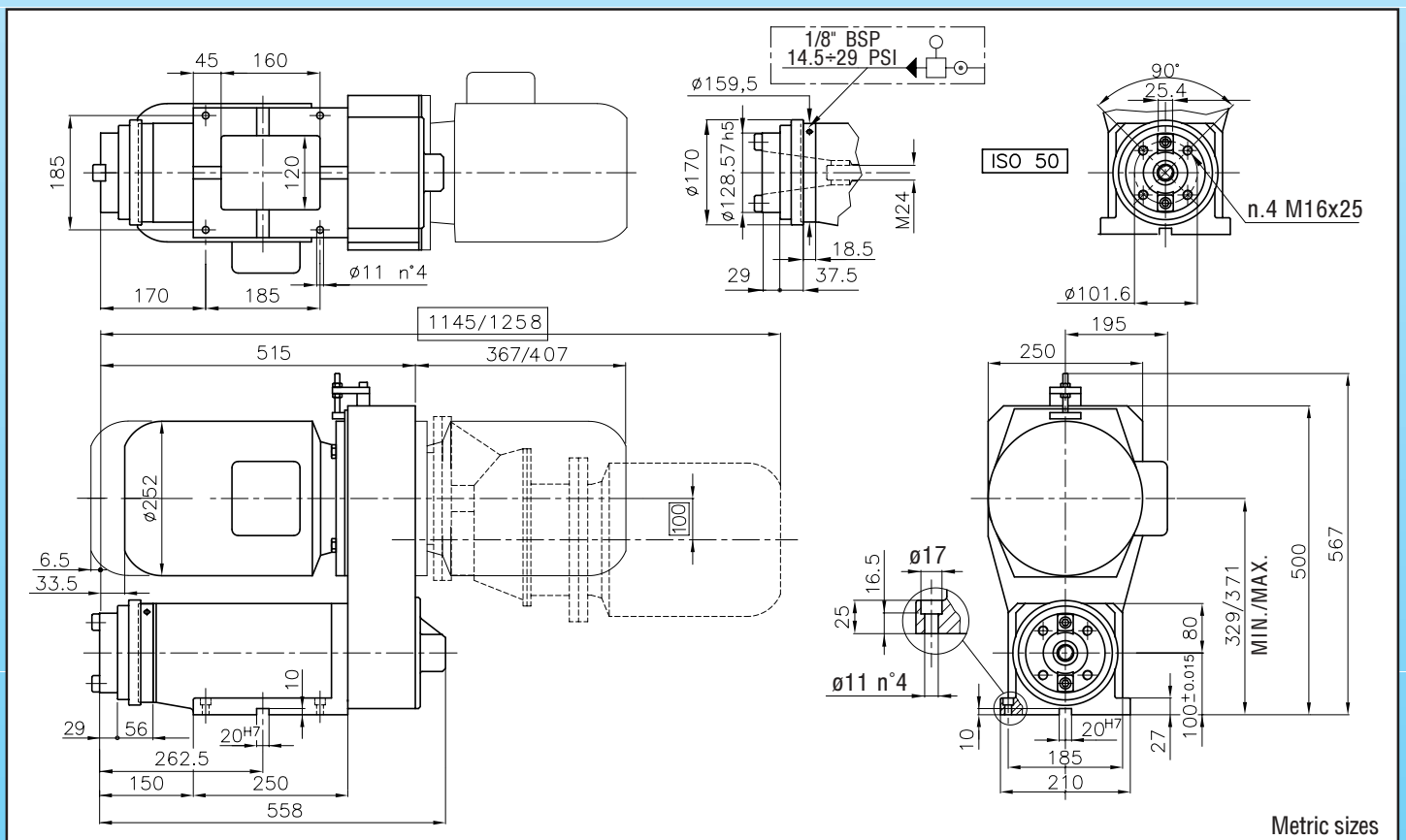
On **drilling and milling** (axial or radial) applications, model F.50.RC is to be used as it is fitted with adjustable taper roller bearings.

On **boring** applications, model F.50.CO is to be used as it is fitted with a pack of three pre-loaded precision angular contact bearing.



SPINDLE HEAD		SPEED	
TYPE	CODE	50 Hz	60 Hz
F.50.600.RC	10108715	■ 600	720
F.50.1000.RC	10108720	■ 1000	1200
F.50.1450.RC	10108725	■ 1450	1750
F.50.2000.RC	10108730	■ 2000	2400
F.50.2800.RC	10108735	● 2800	3360
F.R50.120.RC	10108700	■ 120	145
F.R50.290.RC	10108705	■ 290	350
F.R50.400.RC	10108710	■ 400	480
F.50.1000.CO	10108750	■ 1000	1200
F.50.1450.CO	10108755	■ 1450	1750
F.50.2000.CO	10108760	■ 2000	2400
F.50.2800.CO	10108765	● 2800	3360
F.50.3500.CO	10108770	● 3500	4200
F.50.4000.CO	10108775	● 4000	4800

F.50	TECHNICAL FEATURES										
	DRILLING CAPACITY mm (inch)		MAX. AXIAL THRUST N (lbs)		MOTOR (IP 55 protection)				kg (lbs)	STANDARD COLOUR RAL	MAX RUNOUT mm (inch) T.I.R.
	MILD STEEL	ALLUMINIUM BRASS	TAPER ROLLER	ANGULAR CONTACT	STANDARD FRAME 132		OPTIONAL FRAME 132				
	R=60	R=40 R=50			2 P	4 P	2 P	4 P	WEIGHT		
	50 (1.97")	64 (2.52")	20000 (4410)	8000 (1764)	●	■	●	■	125 (276)	7035	0.01 (.0004")



ACCESSORIES

MACHINING UNIT WITHOUT MOTOR		TYPE	CODE
		F.50.RC max speed 3000 R.P.M.	10108701
		F.50.CO max speed 5000 R.P.M.	10108751

Metric sizes

MOTOR WITH INTEGRATED INVERTER	TYPE	CODE
motor + inverter + EMI filter + servomotor. 	MII100b4 B5 4 poles 3 phase 380/440 V 50-60 Hz 3 Kw (A) nom. 7,2 (A) max. 18 IP 55	Standard motor 43053007 Optional A 28012005 Optional B 28012006

Metric sizes

MOTOR POSITION	NOTE
	To specify with order. No added cost

COOLANT THRU SPINDLE	TYPE	CODE
	—	28010094

Metric sizes

MOTOR POSITION	CODE
	To specify with order. No added cost

HYDRAULIC TOOL HOLDER	TYPE	CODE
	—	28012013

Metric sizes

FLANGE FOR MULTISPINDLE HEAD	TYPE	CODE
	—	M9910038

HYDRAULIC TOOL HOLDER WITH COOLANT	TYPE	CODE
	—	28012014

Metric sizes

FROM ISO 50 DIN 2080 TO TR 48 DIN 55058	TYPE	CODE
	—	10961006

Metric sizes

SPINDLE ROTATION CONTROLL	NOTE
	Please consult engineering office

Metric sizes

FROM ISO 50 DIN 2080 TO ER 32	TYPE	CODE
	A	10961007
	B	445301..
	C	44550116

Metric sizes