

The electro-hydraulic machining unit C.50 consists of a hydraulic slide, fitted with ball guides carrying an ISO 50 cast iron body spindle head.  
 C.50 = F.50 (page 96) + S.TI.300 (page 108).  
 The spindle is available in two different bearing configurations which make them suitable for specific applications i.e. :

**MACHINING UNIT = C.50.RC**

(adjustable taper roller bearings)

This unit is especially suitable for drilling and axial or radial milling applications.

**BORING UNIT = C.50.CO**

(set of three pre-loaded angular contact bearings)

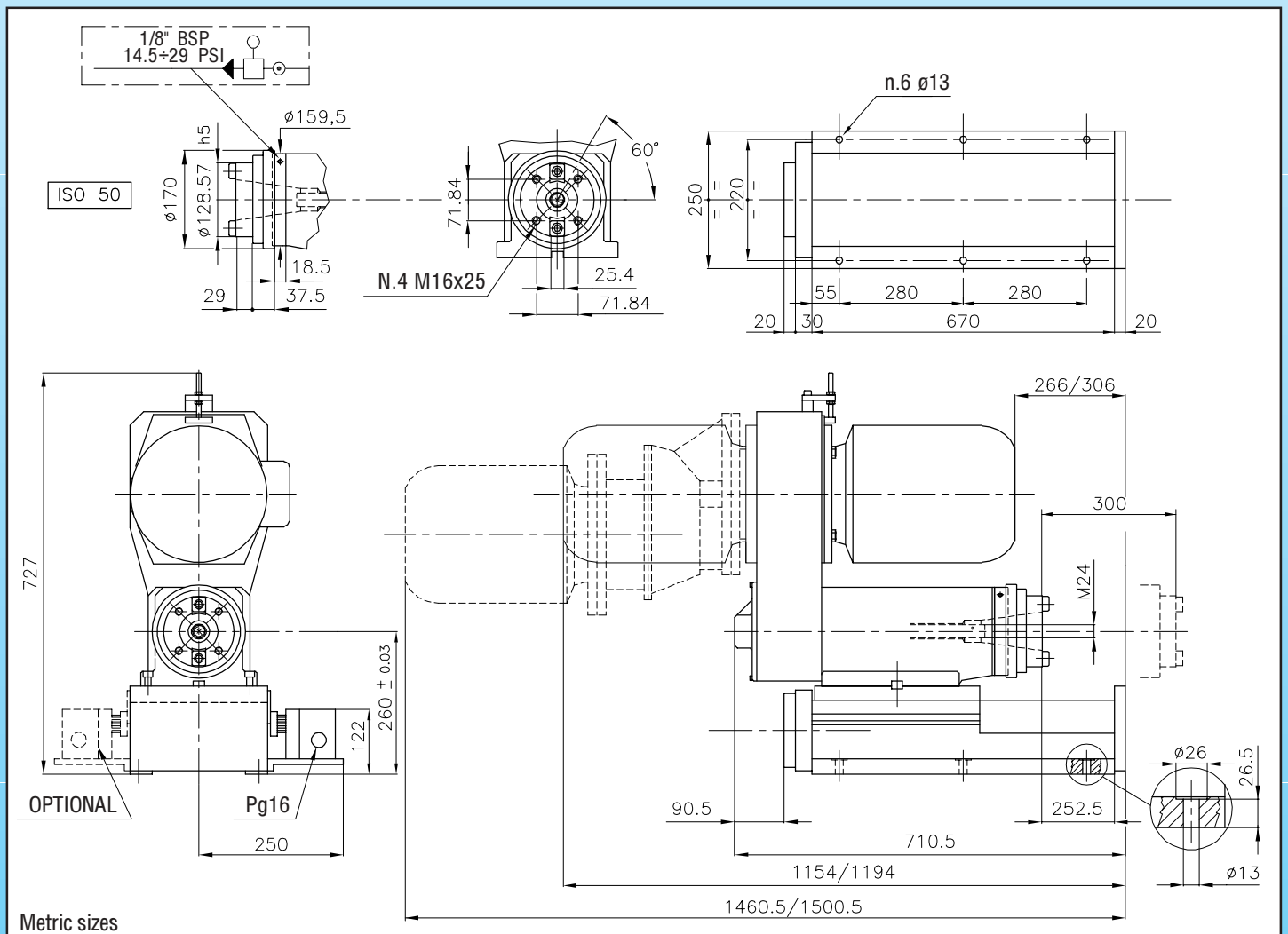
This unit is especially suitable for precision boring applications.



The unit is supplied complete with four micro switches and adjustable cams. The switch unit is sealed and is usually fitted on the right hand side of the slide.

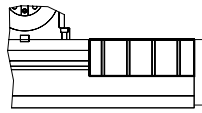
Speeds lower than 600 R.P.M. (at 50Hz) are obtained by fitting a reduction gear "R".

The F.40 can be fitted to other slide units (longer strokes or ball feed slides etc.).

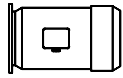


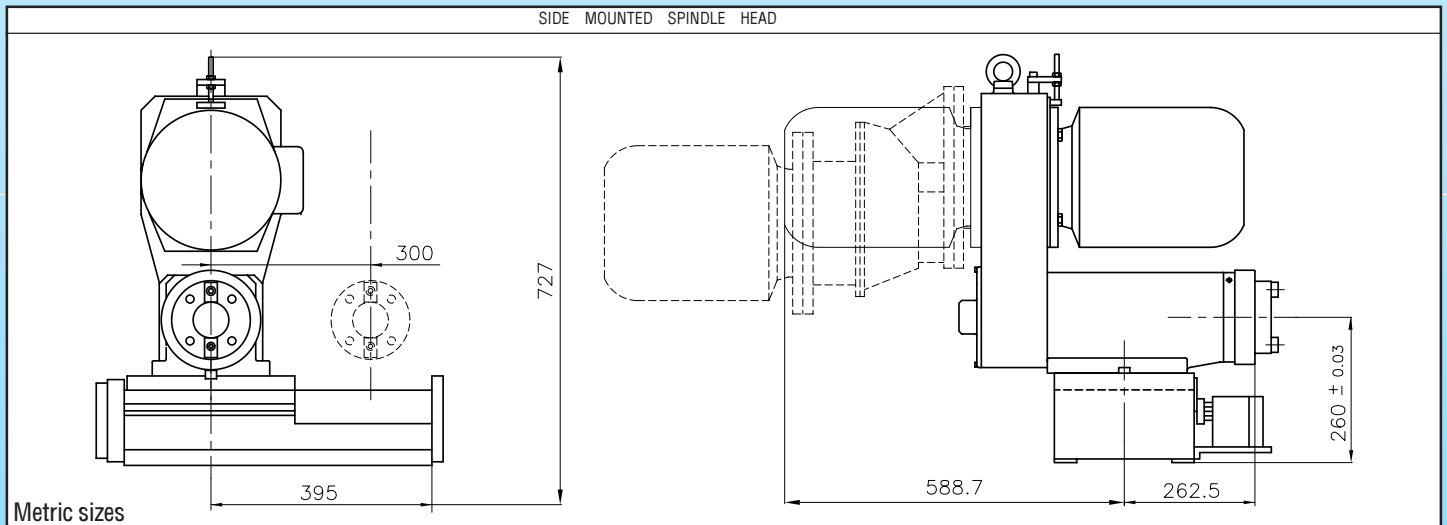
MACHINING UNIT		SPEED	
TYPE	CODE	50 Hz	60 Hz
C.50.600.RC	10112630	■ 600	720
C.50.1000.RC	10112631	■ 1000	1200
C.50.1450.RC	10112632	■ 1450	1750
C.50.2000.RC	10112633	■ 2000	2400
C.50.2800.RC	10112634	▲ 2800	3360
C.R50.120.RC	10112620	■ 120	145
C.R50.290.RC	10112621	■ 290	350
C.R50.400.RC	10112622	■ 400	480

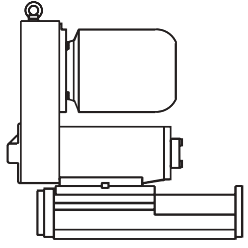
BORING UNIT		SPEED	
TYPE	CODE	50 Hz	60 Hz
C.50.1000.CO	10112660	■ 1000	1200
C.50.1450.CO	10112661	■ 1450	1750
C.50.2000.CO	10112662	■ 2000	2400
C.50.2800.CO	10112663	▲ 2800	3360
C.50.3500.CO	10112664	▲ 3500	4200
C.50.4000.CO	10112665	▲ 4000	4800

ACCESSORIES			
MACHINE	SLIDEWAY COVER	STROKE	CODE
SLIDE S.TI.300		300 mm (11.81")	28050046
SPINDLE HEAD F.50	PLEASE NOTE THE RANGE OF ACCESSORIES OF THE SPINDLE HEAD F.50 ON PAGE 35		

**IN CASE OF A MULTISPINDLE HEAD ASSEMBLY, PLEASE CONSULT OUR ENGINEERING OFFICE.**

MOTORS			
	KW. 5.5 2P	FRAME 132 ▲	Other motor powers are available on request
	KW. 5.5 4P	FRAME 132 ■	



	TECHNICAL FEATURES													
	TOTAL STROKE mm (inch.)	DRILLING CAPACITY mm (inch)			MAX AXIAL LOAD N (lbs)	CYLINDER SECT AREA cm <sup>2</sup> (inch <sup>2</sup> )		THRUST N (lbs)		WEIGHT KG (lbs)	STANDARD COLOUR RAL	HYDRAULIC PORTS BSP-NPT	END SWITCHES RATING	MAX RUN OUT mm (inch) T.I.R.
		MILD STEEL R=60	ALLUMINIUM R=40	BRASS R=50		Advance	Retract	40 bar (580 P.S.I.)	50 bar (725 P.S.I.)					
C.50.RC	300 (11.81")	50 (1.97")	60 (2.36")	60 (2.36")	20000 (4410)	31.17 (4.82")	21.13 (3.28")	12400 (2734)	15500 (3418)	235 (518)	7035	1/4"	250 V dc/ac	0.01 (.0004")
C.50.CO	300 (11.81")	See axial load			8000 (1764)	31.17 (4.82")	21.13 (3.28")	12400 (2734)	15500 (3418)	235 (518)	7035	1/4"	250 V dc/ac	0.01 (.0004")