

The electro-hydraulic machining unit C.39 consists in a hydraulic slide fitted, with ball guides carrying an ISO 40 cast iron body spindle head. C.39 = F.40 (page 94) + S.CI.200 (page 106). The spindle is available in two different bearing configurations which make them suitable for specific applications:

MACHINING UNIT = C.39.RC
(adjustable taper roller bearings)

This unit is especially suitable for drilling and axial or radial milling applications.

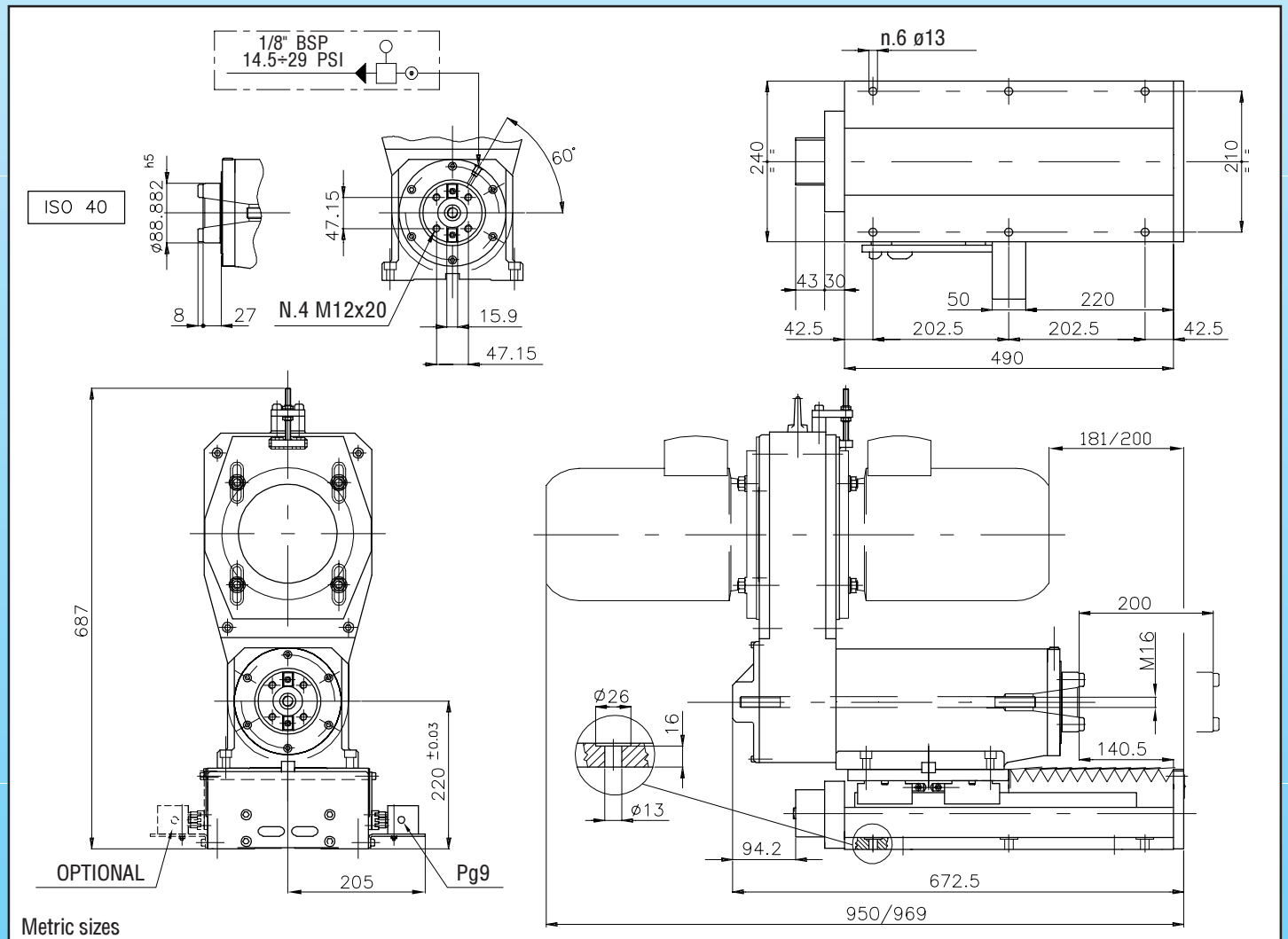
BORING UNIT = C.39.CO
(set of three pre-loaded angular contact bearings)

This unit is especially suitable for precision boring applications.

The unit is supplied complete with four micro switches and adjustable cams. The switch unit is sealed and is usually fitted on the right hand side of the slide.

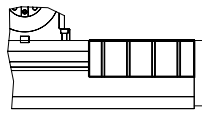
Speeds lower than 600 R.P.M. (at 50Hz) are obtained by fitting a reduction gear "R".

The F.40 can be fitted to other slide units (longer strokes or ball feed slides etc.).

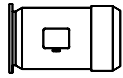


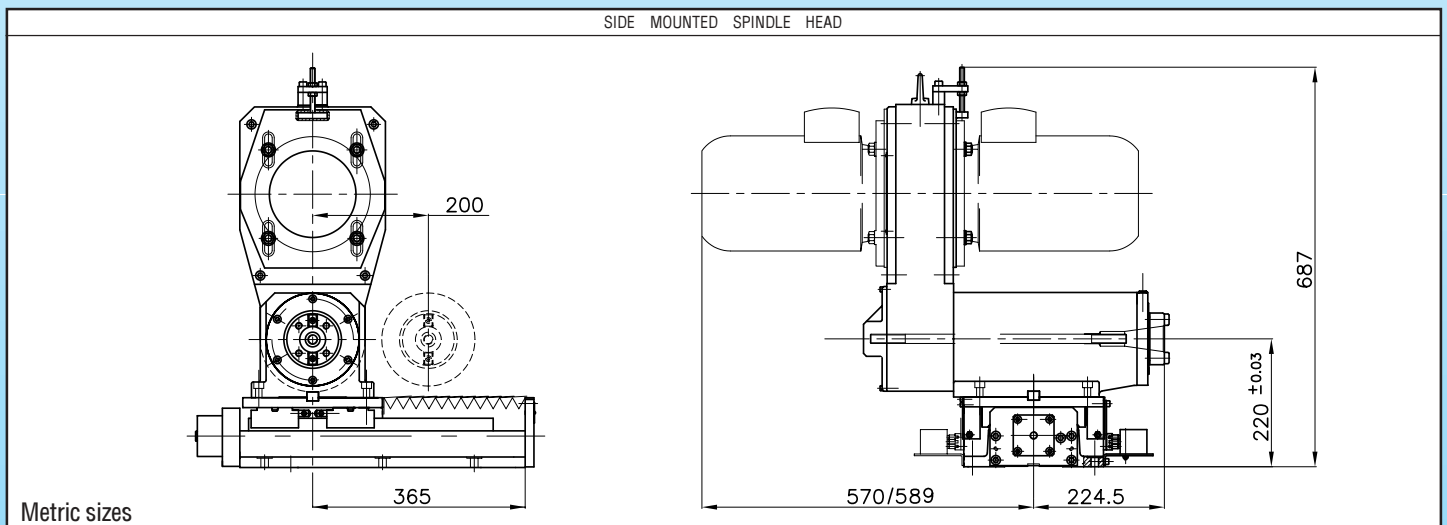
Metric sizes

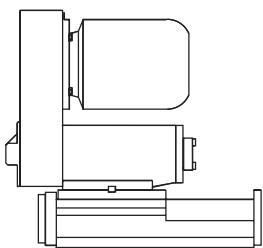
MACHINING UNIT		SPEED	
TYPE	CODE	50 Hz	60 Hz
C.39.600.RC	10112050	■ 600	720
C.39.1000.RC	10112051	■ 1000	1200
C.39.1450.RC	10112052	■ 1450	1750
C.39.2000.RC	10112053	■ 2000	2400
C.39.2800.RC	10112054	● 2800	3360
C.R39.120.RC	10112055	■ 120	145
C.R39.290.RC	10112056	■ 290	350
C.R39.400.RC	10112057	■ 400	480
BORING UNIT	CODE	SPEED	
C.39.1000.CO	10112060	■ 1000	1200
C.39.1450.CO	10112061	■ 1450	1750
C.39.2000.CO	10112062	■ 2000	2400
C.39.2800.CO	10112063	● 2800	3360
C.39.3500.CO	10112064	● 3500	4200
C.39.4000.CO	10112065	● 4000	4800

ACCESSORIES			
MACHINE	SLIDEWAY COVER	STROKE	CODE
SLIDE S.CI.200		200 mm (7.87")	28050040
SPINDLE HEAD F.40	PLEASE NOTE THE RANGE OF ACCESSORIES OF THE SPINDLE HEAD F.40 ON PAGE 95		

IN CASE OF A MULTISPINDLE HEAD ASSEMBLY, PLEASE CONSULT OUR ENGINEERING OFFICE.

MOTORS			
	KW. 3	2P	FRAME 100
	KW. 2.2	4P	FRAME 100
			● Other motor powers are available on request
			■ request



	TECHNICAL FEATURES															
	TOTAL STROKE mm (inch.)	DRILLING CAPACITY mm (inch.)			MAX AXIAL LOAD N (lbs)		CYLINDER SECT AREA cm ² (inch ²)		THRUST N (lbs)		KG (lbs)	STANDARD COLOUR RAL	HYDRAULIC PORTS BSP-NPT	END SWITCHES RATING	MAX RUN OUT mm (inch) T.I.R.	
	MILD STEEL R=60	ALLUMINIUM R=40	BRASS R=50	Taper roller BRGS.	Precision angular contact BRGS.	Advance	Retract	40 bar (580 P.S.I.)	50 bar (725 P.S.I.)	WEIGHT						
C.39.RC	200 (7.87")	38 (1.49")	50 (1.97")	50 (1.97")	15000 (3308)			19.6 (3.04")	15.8 (2.45")	7800 (1720)	9800 (2161)	140 (309)	7035	1/4"	250 V dc/ac	0.01 (.0004")
C.39.CO	200 (7.87")	See axial load				3300 (728)		19.6 (3.04")	15.8 (2.45")	7800 (1720)	9800 (2161)	140 (309)	7035	1/4"	250 V dc/ac	0.01 (.0004")