

Machining unit C.29 consists of an ISO 30 - F.25 spindle head fitted to a linear, row ball slide. Two models are available:

C.PK.29 = F.25 without mounting base (page 91) + collar E.FE100 cod.10410197 + S.CPK.200 (page 110)  
 C.I.29 = F.25 without mounting base (page 91) + collar E.FE100 cod.10410197 + S.CI.200 (page 106)

Each unit is available with two bearing configurations which make them suitable for specific applications:

**MACHINING UNIT** = C.29.RC  
 (adjustable taper roller bearings)

This unit is especially suitable for drilling and axial or radial milling applications.

**BORING UNIT** = C.29.CO  
 (set of three pre-loaded angular contact bearings)

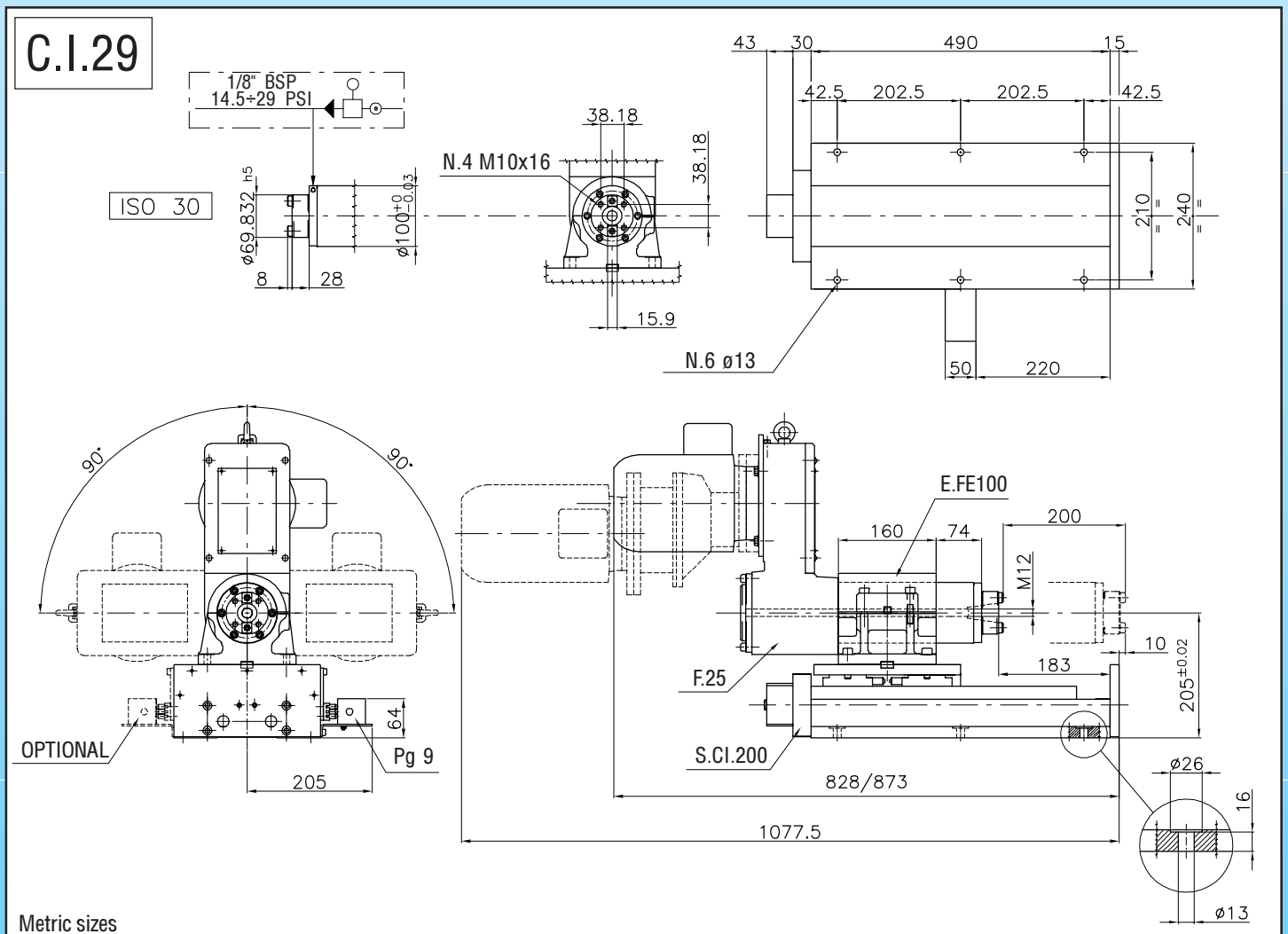
This unit is especially suitable for precision boring applications.

Unit C.PK.29 has magnetic limit switches fitted on the air cylinder.

Unit C.I.29 is supplied complete with three micro switches and adjustable cams. The switch unit is sealed and is usually fitted on the right hand side of the slide.

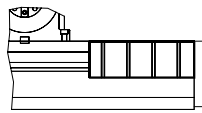
Speeds lower than 450 R.P.M. (at 50Hz) are obtained by fitting a reduction gear box "R".

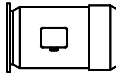
The F.25 can be fitted to other slide units (longer strokes or ball feed slides etc.).

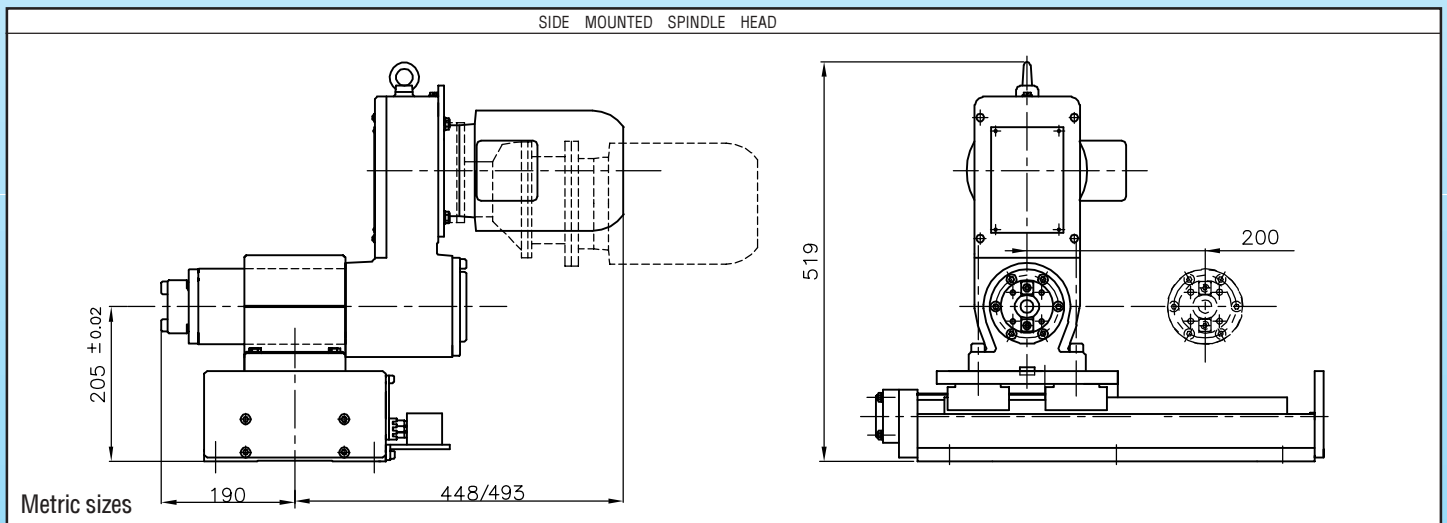


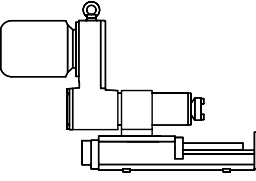
MACHINING UNIT		SPEED	
MACHINING UNIT TYPE	CODE	50 Hz	60 Hz
C.PK.29.A.RC C.I.29.A.RC	10112800	450	540
	10112490	750	900
		1150	1380
		1300	1560
		1500	1800
C.PK.29.2150.RC C.I.29.2150.RC C.PK.29.2800.RC C.I.29.2800.RC	10112801	● 2150	2580
	10112491	● 2150	2580
	10112802	● 2800	3360
	10112492	● 2800	3360
		● 2800	3360
C.PKR.29.B.RC C.IR.29.B.RC	10112803	▲ 90	110
	10112493	▲ 150	180
		▲ 230	275
		▲ 270	325
		▲ 310	370

BORING UNIT		SPEED	
TYPE	CODE	50 Hz	60 Hz
C.PK.29.2150.CO	10112804	● 2150	2580
C.I.29.2150.CO	10112494	● 2150	2580
C.PK.29.2800.CO	10112805	● 2800	3360
C.I.29.2800.CO	10112495	● 2800	3360
C.PK.29.3400.CO	10112806	● 3400	4080
C.I.29.3400.CO	10112496	● 3400	4080
C.PK.29.4200.CO	10112807	● 4200	5040
C.I.29.4200.CO	10112497	● 4200	5040

ACCESSORIES			
MACHINE	SLIDEWAY COVER	STROKE	CODE
SLIDE S.CPK.200 S.CI.200		200 mm (7.87")	28050040
SPINDLE HEAD F.25	PLEASE NOTE THE RANGE OF ACCESSORIES OF THE SPINDLE HEAD F.25 ON PAGE 91		

MOTORS			
	KW. 1,1	2P	80 FRAME
	KW. 1,5	4P	90 FRAME
	KW. 1,1	6P	90 FRAME
			● Other motor powers are available on request
			■
			▲



	TECHNICAL FEATURES															
	TYPE OF THRUST	TOTAL STROKE mm (inch)	DRILLING CAPACITY mm (inch)			MAX AXIAL LOAD N (lbs)	CYLINDER SECT AREA cm <sup>2</sup> (inch <sup>2</sup> )		THRUST N (lbs)		STANDARD COLOR RAL	PNEUMATIC PORTS	HYDRAULIC PORTS BSP-NPT	END SWITCHES RATING	MAX RUN OUT mm (inch) I.I.R.	
			MILD STEEL	R=60	ALLUMINIUM R=40		BRASS R=50	Advance	Retract	PNEUMATIC 6 bar (87 P.S.I)						HYDRAULIC 40 bar (580 P.S.I)
	C.PK.29.RC	pneum.	200 (7.87")	20 (0.79")	24 (0.94")	8000 (1764)	50,2 (19,6)	45,3 (17,8)	3000 (662)	75 (165)	7035	tubing 8/10	1/4"G	250 V ac/dc	0,01 (.0004")	
	C.I.29.RC	hydr.		28 (1.10")	34 (1.34")		19,6 (3.04")	15,8 (2.45")	7800 (1720)							
	C.PK.29.CO	pneum.	200 (7.87")	See axial load			2000 (442)	50,2 (19,6)	45,3 (17,8)	3000 (662)	75 (165)	7035	tubing 8/10	1/4"G	250 V ac/dc	0,01 (.0004")
	C.I.29.CO	hydr.		19,6 (3.04")	15,8 (2.45")	7800 (1720)										