

SUREDRIVE



The Carlson Engineering SureDrive hand-piece is a standard power screwdriver tool, attached to a unique drive head which pneumatically extends and retracts the screwdriver bit. The SureDrive automatic screwdriving heads are designed to work with screwfeeders. The SureDrive head can be setup to drive screws to a specific torque. The SureDrive is one of the most advanced hand held drive heads available. It can be fitted with almost any brand of screwdriver on the market.

KEY FEATURES

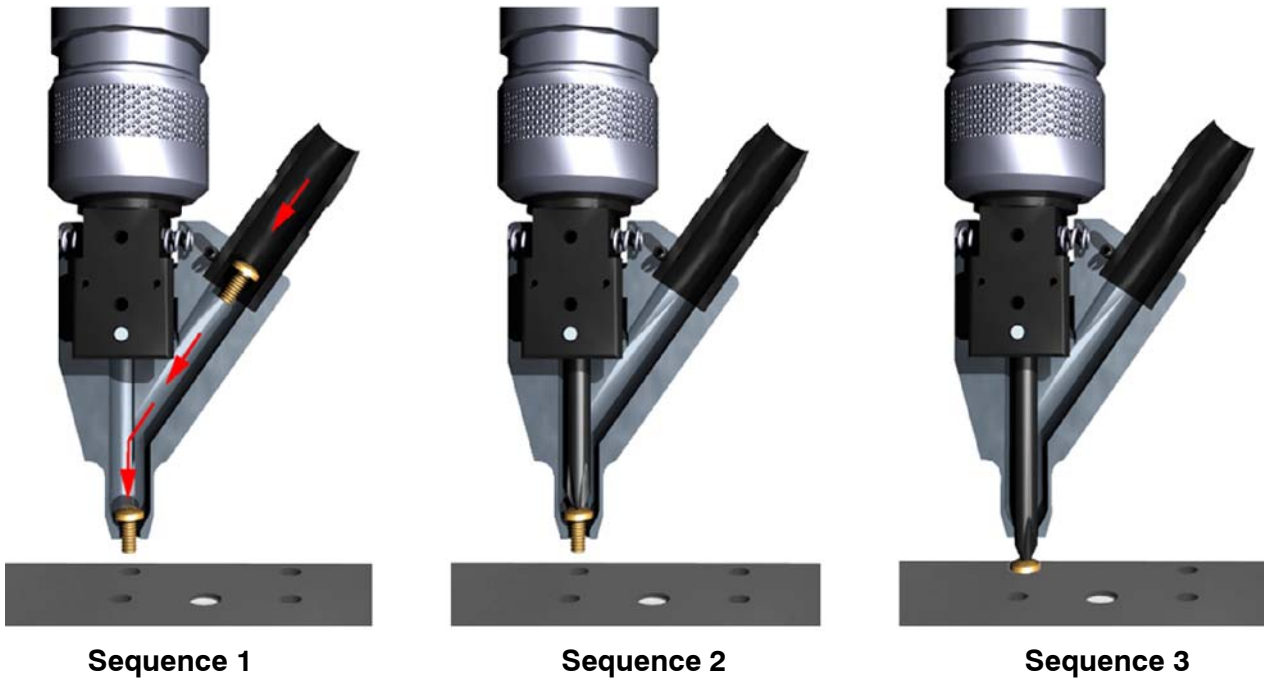
- Equipped with headlock - The bit is locked behind the screw head during each cycle, allowing the screw shank to be used as a guide.
- Easy to use.
- Fast (*up to 60 screws per minute*).
- Automatic bit advance.
- Can be used with a variety of pneumatic and electric tools.
- Reversible.
- 10 nm torque capacity.
- Reversible.
- Small size and weight.
- Simple design with long life.
- Operator push down travel less than 1/8 of an inch.
- Works well for left or right handed operators.
- Ergonomic - Very little push down force required by operator.
- 3 bit stroke lengths available (*1.625", 2.250", and 4.25" of travel*).
- Self advancing bit lifts jaws off of part greatly reducing scuffing.

- Works well for left or right handed operators.
- Easy bit replacement (*simply un-thread the jaw assembly and bit is exposed*).

KEY LIMITATIONS

- Maximum of 40 pounds of downward force that can be applied to screw.
- Force limitation make it less ideal for self drilling screws, which require high thrust.

SCREWDRIVING SEQUENCE

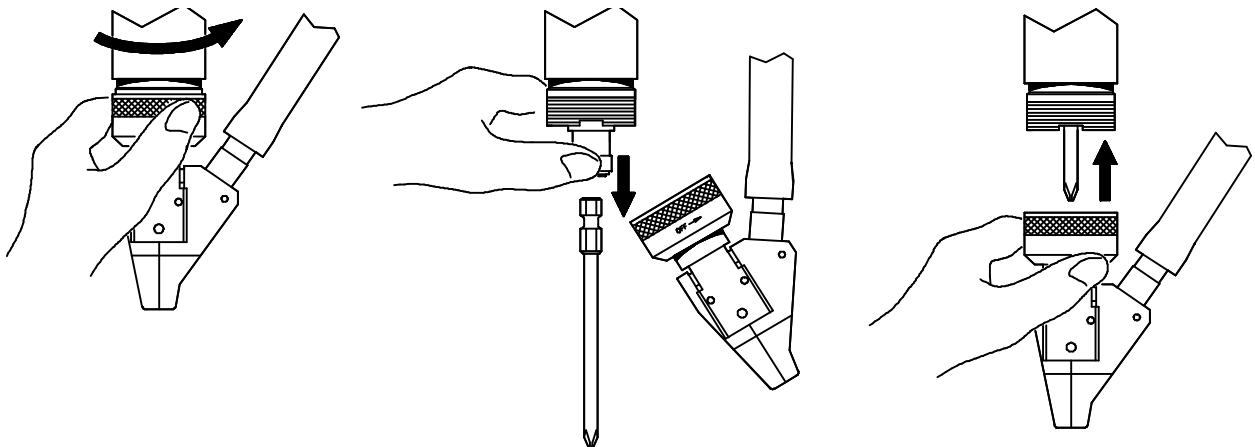


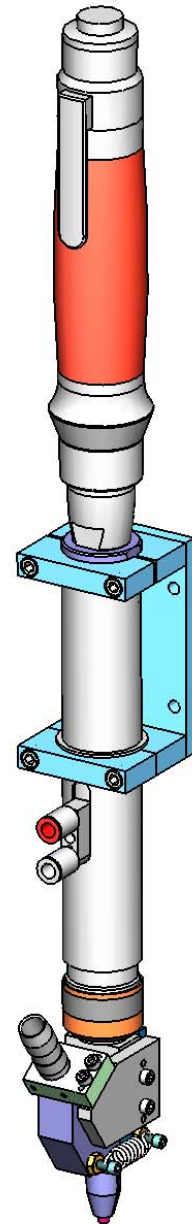
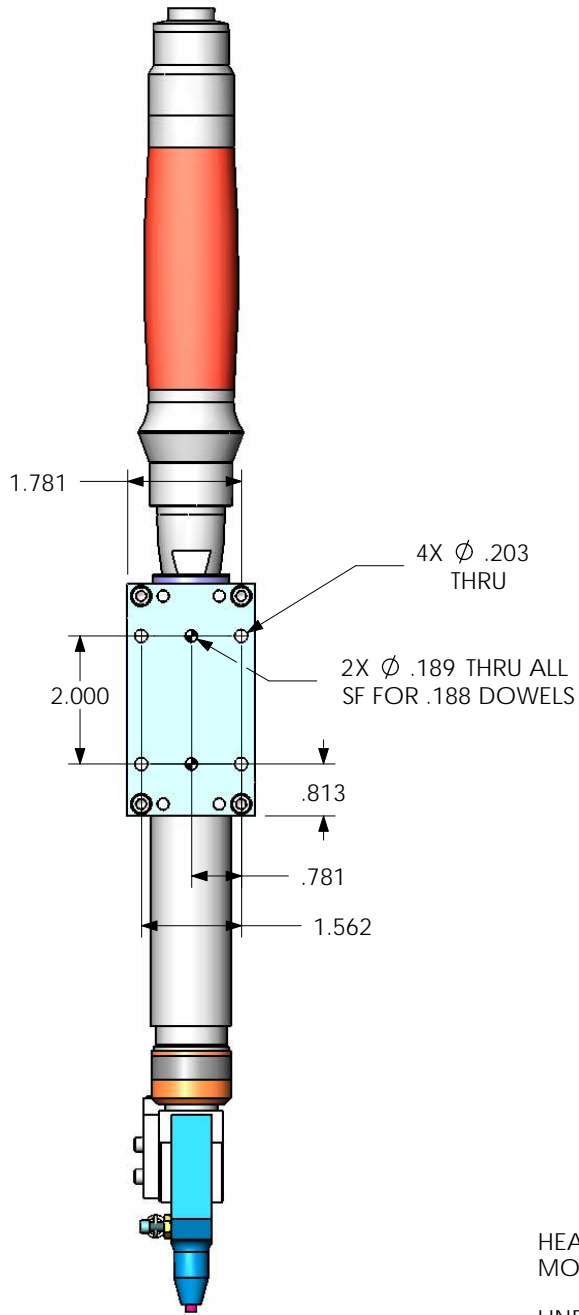
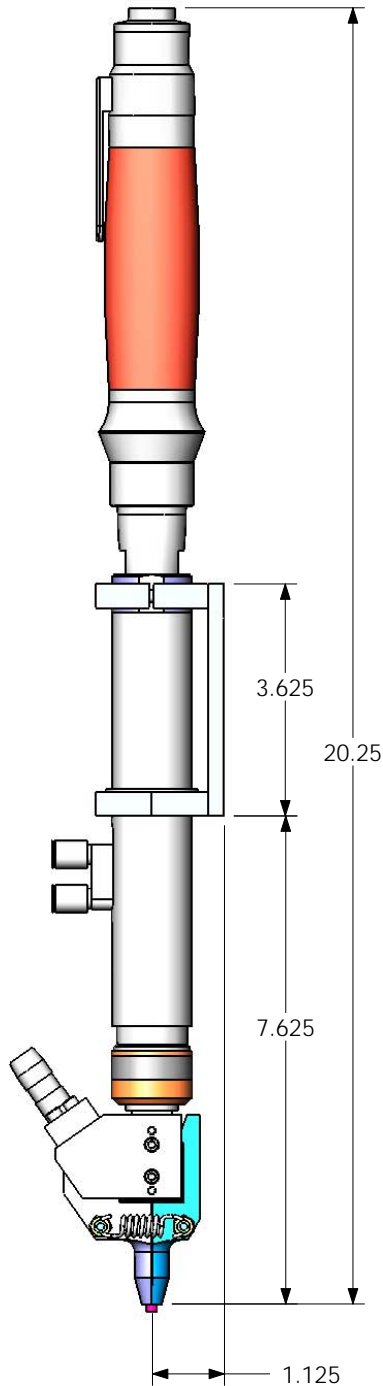
Sequence 1 - The screw is blown into position inside the jaws.

Sequence 2 - The bit locks the screw in place.

Sequence 3 - The screw is driven into the assembly (*Operator push down travel less than 1/8"*).

BIT REPLACEMENT





HEAD WEIGHT: 4.3#2
MOUNTING BRKT: .4#S

LINES REQD:

1 FEEDTUBE
2 1/4" AIR LINES TO HEAD
1 AIR LINE TO TOOL

HEAD THRUST: APPROX. 40#S

**CARLSON
SUREDRIVE**

Carlson Engineering and Manufacturing 425 West Allen, Suite 109 San Dimas, CA 91773 (909)599-8087 Fax (909)592-0703			
TITLE		DRIVE HEAD DIMENSIONS	
DWG. NO.	2006-052277	REV.	-
SIZE	A	SHEET	1 OF 1