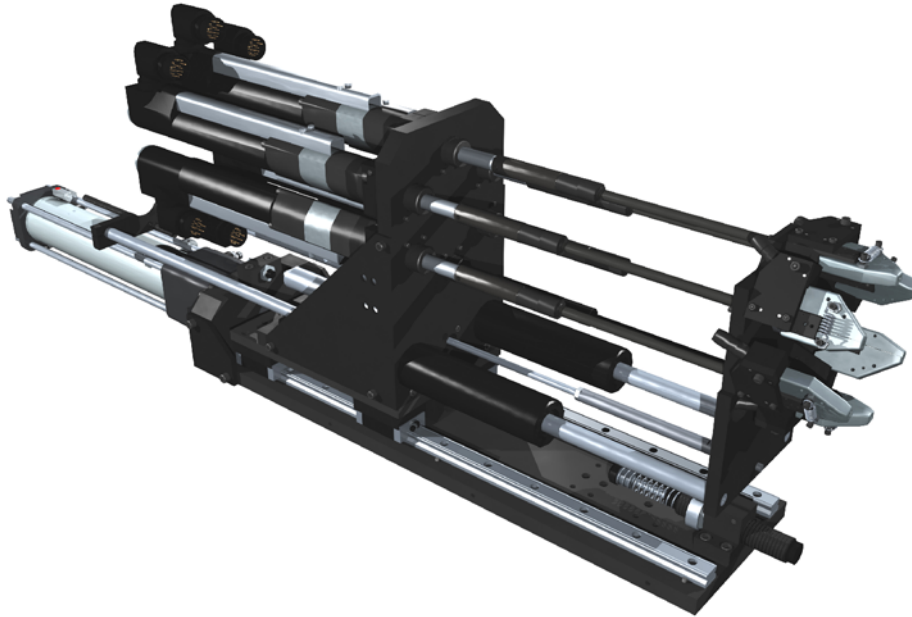


MULTIDRIVE



The Carlson Engineering MultiDrive is a larger version of the MidDrive autofeed head. The MultiDrive autofeed drive head is a self-advancing powered screwdriver for use in automatic screwdriving applications. The Mid-Drive can install screws in any position, including upside down. The modular design makes it possible to optimize the unit to meet different assembly requirements.

The MultiDrive can be fixed on a tool stand, placed on a automatic machine or mounted on a robot.

The MultiDrive can be fitted with almost any brand of screwdriver on the market today.

KEY FEATURES

- The MidDrive is 7" wide.
- Cylinder speed controls and limit switches are included as standard equipment.
- Depth and torque control.
- 200 nm torque capacity.
- Shock absorbers at all ends of travel points.
- Up to 350 pounds of downward force that can be applied to screw.
- Can be tooled with up to 12 spindles.
- Easy Stroke Adjustment.
- Stroke length is 12" standard.
- The MidDrive weighs 75 pounds (*without screwdriver tool*).
- Heavy duty wide liner guide bearing for long life.

- Great for self drilling screw and applications requiring high thrust.
- No part contact - the jaws can be positioned to stop just above the part surface, thus avoiding the possibility of marring painted and finished surfaces.
- 4" screw head diameter.
- Easy bit replacement.

MULTIDRIVE DIMENSIONS

